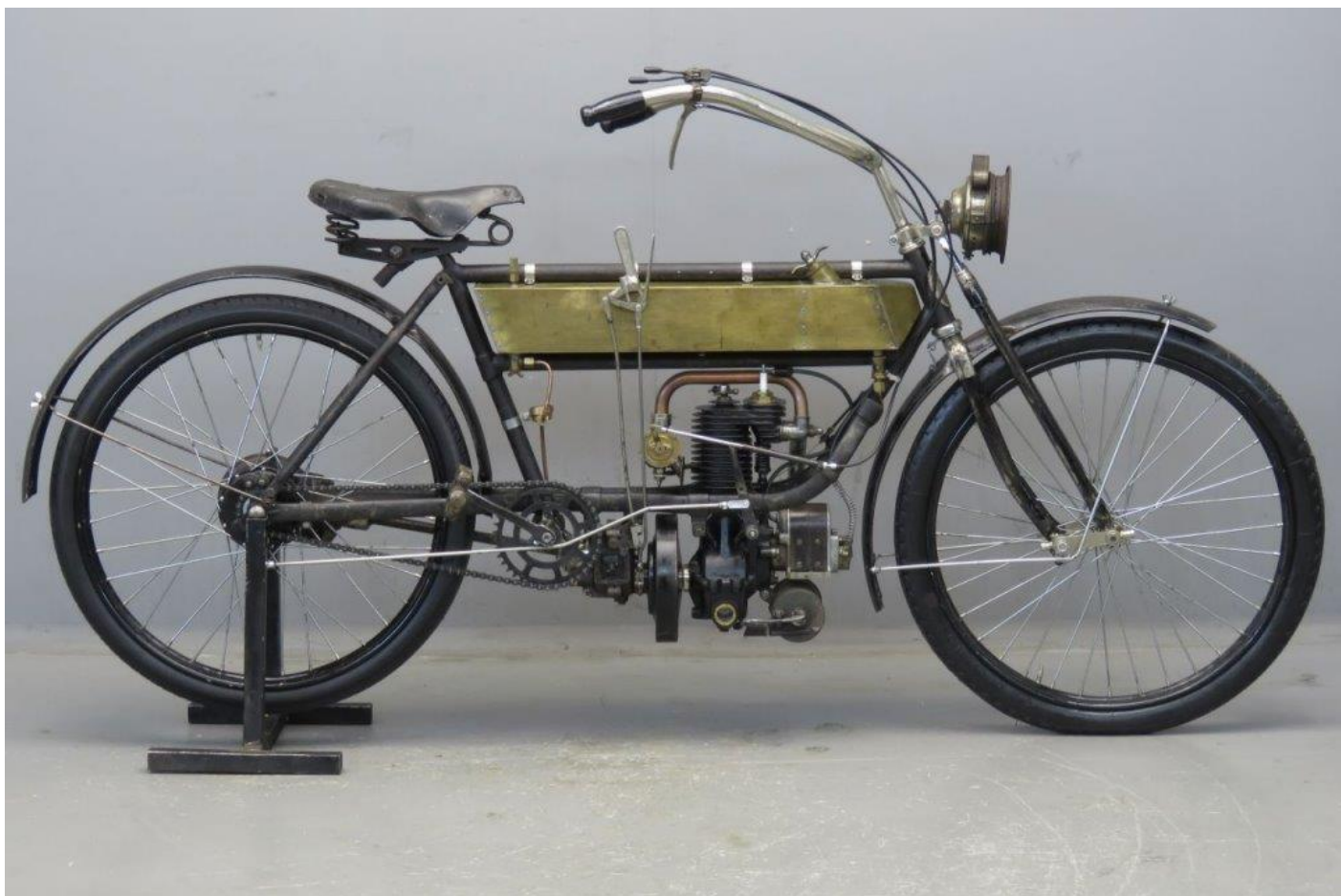




ANTIQUE MOTORCYCLES - ACCESSORIES AND RELATED ITEMS

FN 1912 285 LÉGÈRE 285CC 1 CYL SV 2606



SOLD





ANTIQUE MOTORCYCLES - ACCESSORIES AND RELATED ITEMS

PRODUCT DESCRIPTION

FN 1912 "285 Légère" 285 cc ioe frame # 41019

The first FN single with shaft drive came on the market at the end of 1909.

It was quite an innovative little machine with bore and stroke dimensions of 65x75 mm giving a capacity of 247 cc.

The specifications included a multiple plate clutch and a two speed gearbox.

Weight of the machine was 65 kgs and the fuel consumption was less than 3 litres per 100 kms.

This light single became a popular seller next to the FN four cylinder model.

In 1912 the capacity was enlarged to 285 cc and the frame was changed, resulting in a longer and lower machine.

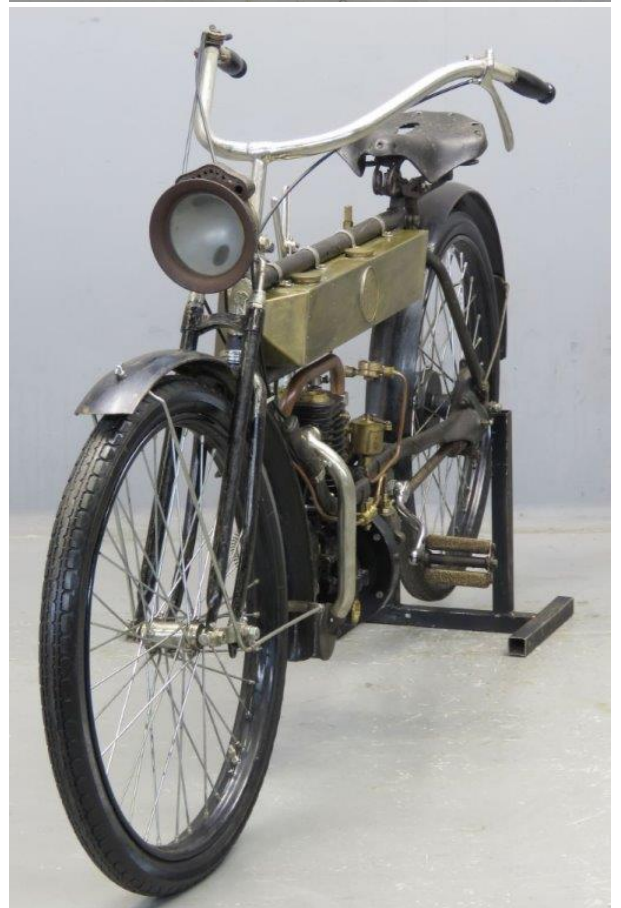
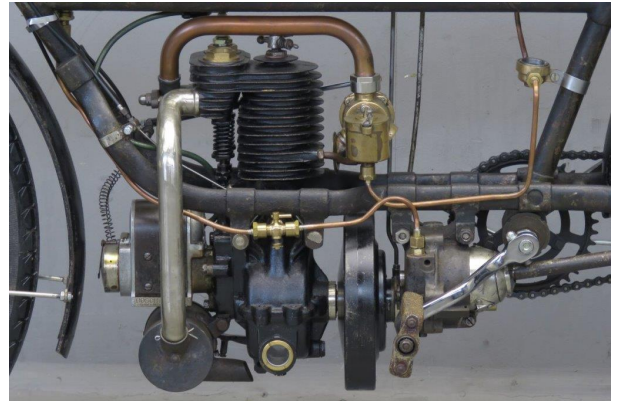
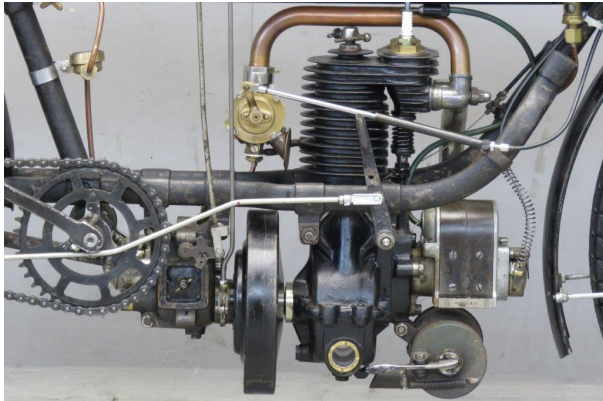
When production was resumed after the war the side -by- side valve concept was changed to inlet-over exhaust and the machine got a kick starter.

Production ended in 1922.

This technically interesting and easy to ride lightweight is in unrestored condition



ANTIQUE MOTORCYCLES - ACCESSORIES AND RELATED ITEMS





ANTIQUE MOTORCYCLES - ACCESSORIES AND RELATED ITEMS

